

# EQUINE PRO



# Developer

*A high protein, high energy mixed feed suitable for a range of horses.*



EquinePro® Developer is specifically formulated for all your breeding stock, providing a seamless transition into weaning, allowing you to successfully manage rapidly growing youngsters. Made from a selection of steam rolled grains and legumes, oil seeds, pelleted protein meals, vitamins and minerals (including organic minerals), blended with molasses and oil, presenting the horse with a highly palatable feed.

EquinePro® Developer is suited for feeding to a range of horses  
 - Broodmares during pregnancy and lactation, Weanlings and Yearlings in preparation for sale, rapidly growing horses, including recovery and weight gain and during early stages of their racing career.

### FEEDING:

- Introduce EquinePro® Developer into the diet slowly over 7 to 14 days.
- Feed by weight, not volume.
- Ensure your horse has access to clean, fresh water at all times.
- Feed in conjunction with a minimum of 1% of the horse's bodyweight as roughage.
- EquinePro® Developer can be fed in conjunction with other grains, but the addition of other vitamins and minerals is NOT recommended, unless under veterinary or nutritional advice.
- Feed in two or more equal sized feeds, spaced evenly through the day.

### BODYWEIGHT (KG)

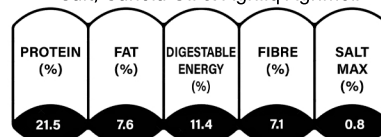
	400kg	500kg	600kg
Dry and Early Pregnant Mares	0.75kg -1.5kg	1.0kg-2.0kg	1.5kg-2.5kg
Late Pregnant Mares	1.0kg-2.0kg	1.5kg-2.5kg	2.0kg-3.0kg
Lactating Mares	1.5kg-2.5kg	2.0kg-3.0kg	2.5kg-3.5kg
Stallions	1.0kg-2.0kg	1.5kg-2.5kg	2.0kg-3.0kg

### ESTIMATED MATURE BODYWEIGHT (kg)

	400kg	500kg	600kg
Weanlings	1.25kg-1.75kg	1.5kg-2.0kg	1.75kg-2.25kg
Yearlings and 2YOs	1.5kg-2.0kg	1.75kg-2.25kg	2.0kg-2.5kg

### Ingredients:

Steam Rolled Lupins & Maize.  
 Whole FD Sunflower Seeds.  
 Limestone(fine), MHA Methonine,  
 EquinePro® Breeder PMX Pellet,  
 Salt, Canola Oil & Agriliq Agrimol.



\*All specified values are averages

### EquinePro®

View St Koondrook VIC 3580

P. (03) 5453 2433

E. [nutrition@equinepro.com.au](mailto:nutrition@equinepro.com.au) W. [equinepro.com.au](http://equinepro.com.au)

Our dedicated Equine manufacturing site has specialised in manufacturing equine feeds since 2004.

All of our sites are accredited under FeedSafe® The quality assurance program of the SFMCA.

This ensures all products are of the highest quality and standard.

EquinePro® believes the information contained in this document to be true and correct for the applications as described. Updates may be made to product specifications, usage guidelines, and/or ingredients used in these products. Customers must seek advice from EquinePro® if there is any doubt regarding the usage of products described.

Subject to those terms implied by statute which cannot be excluded restricted or modified, no warranty of accuracy or reliability is given and no responsibility to the customer or any other person is accepted for errors or omissions howsoever arising, including matters arising through negligence by EquinePro® it's Directors, employees or agents.

