

EQUINE PRO

P.V.M

A concentrated mix of Protein, Vitamins & Minerals for horses



EquinePro® Protein Vitamin Mineral (PVM) Concentrate is a highly palatable blend of protein meals and omega fatty acids combined with a high quality amino acid, mineral, trace mineral (including organic minerals) and vitamin balancer pellet to support skeletal and muscular growth and development of breeding and performance horses.

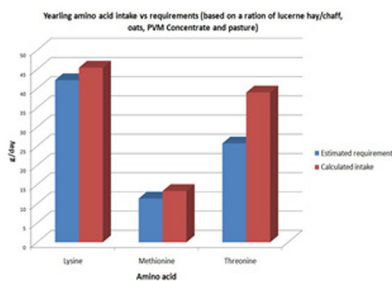
Essential amino acids such as lysine, methionine and threonine are critical nutrients and if lacking in the diet, growth and development of foals may be slowed, milk quality and production of lactating mares decreased and athletic performance adversely affected.

Under circumstances of ample pasture availability, "Complete" feeds may fail to provide adequate levels of protein as well as minerals and vitamins when limit fed. Furthermore, foals that are "behind" or conversely fast growing may have higher nutrient requirements than the average growing foal on the property.

FEEDING:

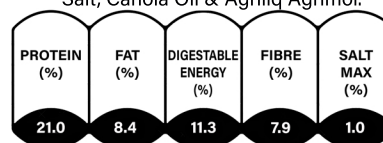
Weanlings/Yearlings: 1–1.5kg
 Pregnant mares: 1kg
 Lactating mares: 1.5kg
 Spellers: 1–1.5kg
 Racehorses: 2kg

**Plus 1–2kg lucerne chaff, grain according to body condition & workload, and free access to additional roughage as hay/pasture. Feeding rates are intended as a guide only. Please contact us for advice regarding the use of EP PVM Concentrate at lower or higher levels.



Ingredients:

Steam Rolled Lupins, Whole FD Sunflower Seeds, Limestone (fine), MHA Methionine, Lysine, EquinePro® Breeder PMX Pellet, Salt, Canola Oil & Agriliq Agrimol.



*All specified values are averages

EquinePro®

aw St Koondrook VIC 3580

P. (03) 5453 2433

E. nutrition@equinepro.com.au W. equinepro.com.au

Our dedicated Equine manufacturing site has specialised in manufacturing equine feeds since 2004.

All of our sites are accredited under FeedSafe® The quality assurance program of the SFMCA.

This ensures all products are of the highest quality and standard.



EquinePro® believes the information contained in this document to be true and correct for the applications as described. Updates may be made to product specifications, usage guidelines, and/or ingredients used in these products. Customers must seek advice from EquinePro® if there is any doubt regarding the usage of products described. Subject to those terms implied by statute which cannot be excluded restricted or modified, no warranty of accuracy or reliability is given and no responsibility to the customer or any other person is accepted for errors or omissions howsoever arising, including matters arising through negligence by EquinePro® it's Directors, employees or agents.