

EQUINE PRO



Spelling

A high quality mixed feed suitable for Spelling Performance & Race Horses



EquinePro® **Spelling** is a palatable blend of premium grains, protein meals, omega fatty acids, a high quality amino acid, minerals, trace minerals (including organic minerals) and a vitamin balancer pellet designed to promote recovery form and preparation for racing and performance.

Spelling performance horses have varied nutritional requirements depending on their level of fatigue following intense periods of activity, and the amount of recovery time available prior to the recommencement of training.

EquinePro® **Spelling** has been formulated with the aim of speeding up recovery time in work and promoting the health and strength of horses in preparation for re-training.

The EquinePro® **Spelling** mix is based on high quality protein for muscle recovery, cool conditioning energy sources for promotion and management of body condition, and a high nutrient profile to promote bone strength in preparation for early training

EquinePro® **Spellings** formulation has been scientifically balanced against typical Australian pastures and roughage sources (using tested data), promoting optimal nutrient supply when offered at recommended feeding rates.

FEEDING:

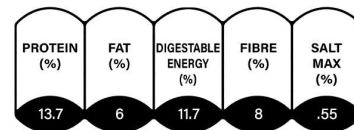
- Introduce EquinePro® **Spelling** into the diet slowly over 7 to 14 days.
- Feed by weight, not volume.
- Ensure your horse has access to clean, fresh water at all times.
- Plus 1-2kg of lucerne chaff and free access to additional roughage as hay/pasture

EQUINEPRO SPELLING FEEDING RATE (kg)

Spelling Performance & Race Horses 5kg or as required

Ingredients:

Steam Rolled Barley, Lupins & Maize.
Whole FD Sunflower Seeds. Whole
Clipped & Graded Oats, Lysine,
Limestone(fine), Dicalcium Phosphate,
Salt, Canola Oil, EquinePro Breeder Conc PLT
& Agriliq Agrimol.



*All specified values are averages



EquinePro®
View St Koondrook VIC 3580
P. (03) 5453 2433

E. nutrition@equinepro.com.au W. equinepro.com.au

Our dedicated Equine manufacturing site has specialised in manufacturing equine feeds since 2004.

All of our sites are accredited under FeedSafe® The quality assurance program of the SFMCA.

This ensures all products are of the highest quality and standard.

EquinePro® believes the information contained in this document to be true and correct for the applications as described. Updates may be made to product specifications, usage guidelines, and/or ingredients used in these products. Customers must seek advice from EquinePro® if there is any doubt regarding the usage of products described. Subject to those terms implied by statute which cannot be excluded restricted or modified, no warranty of accuracy or reliability is given and no responsibility to the customer or any other person is accepted for errors or omissions howsoever arising, including matters arising through negligence by EquinePro® it's Directors, employees or agents.